

# Kühl®

Stylish Fans  
*Above all.*



USER MANUAL

IS 374:2019



CM/L-8800112515



100% COPPER  
INDUCTION MOTOR

HIGH  
AIRFLOW

MIST  
HUMIDIFIER

LOW  
NOISE

**2** YEARS  
WARRANTY

## Kühl EXZEL H2

Next-Gen Desert Cooler

MARCH 2024



# Welcome to Kühl

Dear Customer,

Thank you for choosing Kühl Stylish Fans. Our Next-Gen Desert Cooler offer high speed fast cooling with low noise and our cutting-edge technology gives you the satisfaction of low electricity bills.

We prioritize customer satisfaction, ensuring each Kühl Stylish fan undergoes rigorous testing across all aspects of its operation, effectiveness, and efficiency. Our comprehensive testing procedures evaluate its performance under diverse working conditions, guaranteeing a product that exceeds expectations.

Kühl Exzel H2 Next-Gen Desert Cooler enhances the experience of a desert cooler with 100% copper induction motor and a low noise function. It comes with ultrasonic mist humidifiers that ensure a fine mist without any water droplets, offering a more efficient and clean way to maintain optimal humidity levels. With ample water tank capacity and remote functioning, it elevates your convenience and alleviates any need for constant tank refilling. Reimagine your desert cooler experience with unparalleled performance and comfort with Kühl Exzel H2.

Thank you!

# TABLE OF CONTENTS

1. Introduction .....	4
2. Features of Kühl Exzel H2 Next-Gen Desert Cooler .....	4-5
3. Items in the Box .....	6
4. Assembly Instructions .....	7-10
5. Know your Remote Control Device .....	11-12
6. Know your Fan Operation .....	13-14
7. Cleaning and Maintenance .....	15

## INTRODUCTION

Enhance your living space with the Kühl Exzel H2 Next-Gen Desert Cooler. Featuring an advance 100% copper induction motor and ultrasonic mist humidifier, this remote-controlled fan offers impressive energy efficiency and quiet operation. Its modern design adds a touch of sophistication to any home, while the ultrasonic mist humidifier technology prevents water droplets. With a spacious water tank, these coolers reduce the need for frequent refills. Enjoy added convenience with features like a LED indicator lights speed display, ensuring a comfortable and refreshing atmosphere with every use.

## FEATURES OF YOUR KÜHL EXZEL H2 NEXT-GEN DESERT COOLER

- **100% Copper Induction Motor:** Kühl Stylish Fans offer better speed versus torque characteristics. It ensures high dynamic response and efficiency. Thanks to its lack of electrical and friction losses, it offers long operating life and ensures one more step towards building a sustainable future.
- **Mist Humidifier:** Revel in the refreshing breeze with the Kühl Exzel H2 Next-Gen Desert Cooler's mist humidifier technology with no water droplet. This cutting-edge feature ensures a fine mist for optimal humidity without the inconvenience of water droplets.
- **Water Storage:** Kühl Exzel H2 sports a generous storage capacity of 3.2 liters that lasts for up to 8 hours, ensuring uninterrupted cooling performance and allowing you to relax and enjoy the refreshing breeze without the need for frequent attention.
- **LED Indicator Lights of Speed & Mist:** The Kühl Exzel H2 Next-Gen Desert Cooler redefines ease of use with its LED indicator lights of Speed & Mist. This intuitive feature allows for the precise monitoring of fan speed and mist output, all visible through changes made via the remote controller.
- **Highest Air Delivery:** Energy efficient operation with around 75 W Power, 400 mm Sweep, and high RPM Speed to fill every corner of your place with fresh air as per your need. Its higher air force ensures unmatched comfort in every corner of the place.

- **Low Noise:** A low noise operation without compromising the speed limit is one of the most desired features of Kühl Stylish Fans. They operate at low speeds while providing high airflow with low turbulence and minimal wind noise.
- **Remote Operated:** Kühl Exzel H2 Next-Gen Desert Cooler is remote operated, conveniently adjust the fan speed, set timer, swing, or sleep mode.
- **Oscillation:** The Kühl Exzel H2 features dynamic swiveling capabilities, effortlessly dispersing air to every corner of your space. It's smooth side-to-side motion ensures comprehensive airflow coverage, optimizing comfort throughout the room.
- **Attractive Design:** Stylish enough to enhance the look of your home, Kühl Stylish Fans feature decorative trims and a sleek surface that become the centre of attention in any space.

SPECIFICATION	Kühl Exzel H2 Next-Gen Desert Cooler
<b>Power (Watt)</b>	<b>75</b>
<b>Sweep (mm)</b>	<b>400</b>
<b>Air Delivery</b>	<b>80</b>
<b>Speed in RPM at 5th position</b>	<b>1200</b>

## ITEMS IN THE BOX

S.No.	Particulars	S.No.	Particulars
1.	Front grid	11.	Control buttons
2.	Blade spinner	12.	Bolts
3.	Blades	13.	Power cord
4.	Net frame	14.	Supporting tubes
5.	Plastic nut	15.	Base and base cover
6.	Rear grid	16.	Mist vent (front grid)
7.	Motor	17.	Water tank cover
8.	Lower flexible hose	18.	Water tank
9.	Upper flexible hose	19.	Water tank indicator
10.	Function indicators	20.	Mist generator

## GETTING STARTED

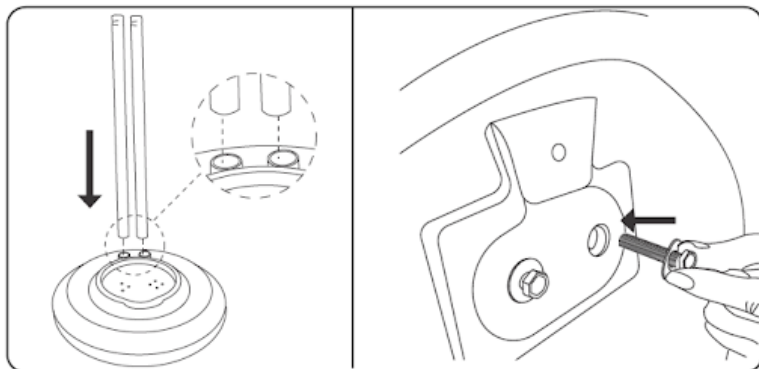
### Before using the misting fan for the first time:

- Carefully unpack the misting fan and remove all the packing materials.
- Place the misting fan on a flat and stable surface.
- Use a soft cloth to remove any dust on the surface that may happen during packing and transport.

## ASSEMBLY INSTRUCTIONS

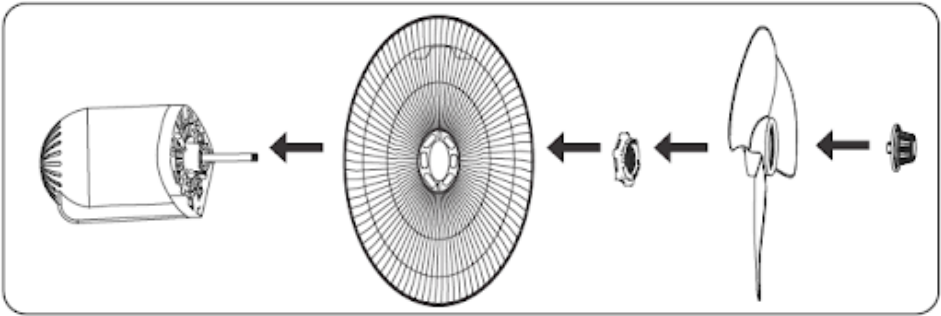
### BASE ASSEMBLY:

Align the two supporting tubes into the holes of the base, then fix them in place from the bottom using the screws provided.



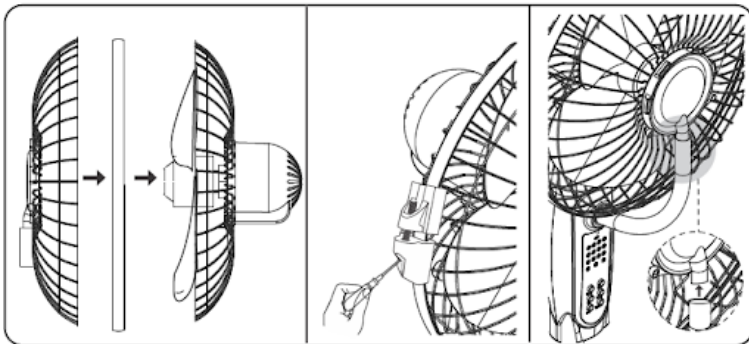
## FAN HEAD/CONTROLLER ASSEMBLY:

- Loose the two thumbscrews located at the back of the fan head/controller. Do not fully unscrew- the two nuts will fall off.
- Locate the two holes underneath the fan head /controller. Assemble the two tubes and push them down until it stops.
- Tighten the two Thumb Screws.



## FAN BLADE AND SAFETY GRID ASSEMBLY:

Install the rear grid, plastic nut, blades, and blade spinner to the motor shaft and fix it in place.

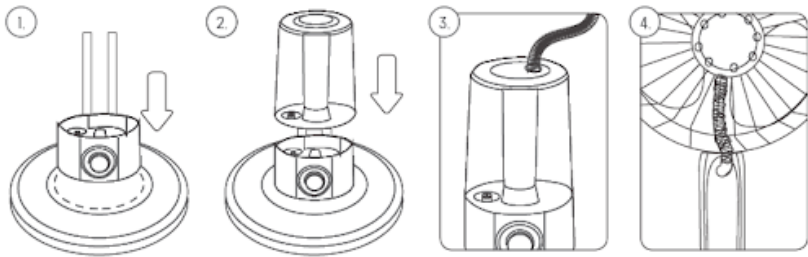


Install the front grid and net frame, and secure using the screw on the net frame. Inset the upper flexible hose on the motor unit into the mist vent that is located at the front of the fan grid (ensure the hose is free of kinks).



## MIST GENERATOR AND WATER TANK

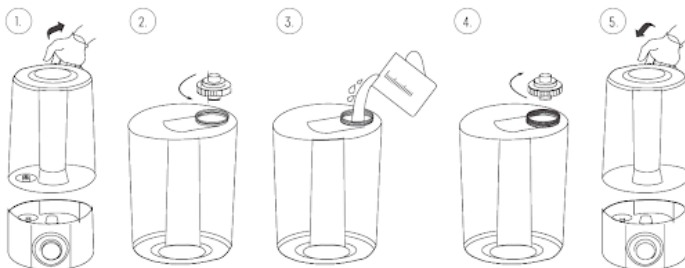
- Place the misting generator on to the base, ensuring it is appropriately seated in the recess.
- Place the water tank on top of the misting generator. Fit the cover to the top of the water tank.
- Insert the lower flexible hose on the motor unit into the water tank cover. (ensure the hose is free of kinks)



## FILLING THE WATER TANK

**Unplug the appliance before filling and cleaning the water tank.**

- Take off the water tank and turn it upside down.
- Twist the cap anticlockwise to unlock it.
- Fill the tank with cold and clean water, making sure not to overfill it.
- Refit the cap and turn clockwise to lock in place.
- Turn the tank over and place it back on the misting generator.



## **ATTENTION!**

- Ensure the product is unplugged from the mains before filling or refilling the water tank.
- Only use water in the water tank. Do not add any chemicals, oils, or other additives.
- Only use cold or warm water in the water tank. The water must not be warmer than 40°C.

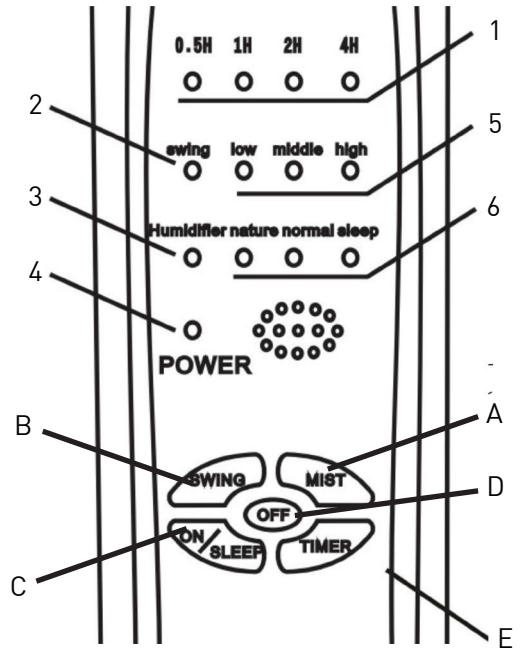
## OPERATION ON THE FAN

When connected to the power supply, the fan is under standby mode. It can be controlled with the control buttons or remote.

## OPERATION INSTRUCTIONS

### INDICATOR LIGHTS:

- 1 Timer indicator
- 2 Oscillation
- 3 Mist indicator
- 4 Power on indicator
- 5 Speed: high-medium-low
- 6 Mode: Normal/Natural/Sleep



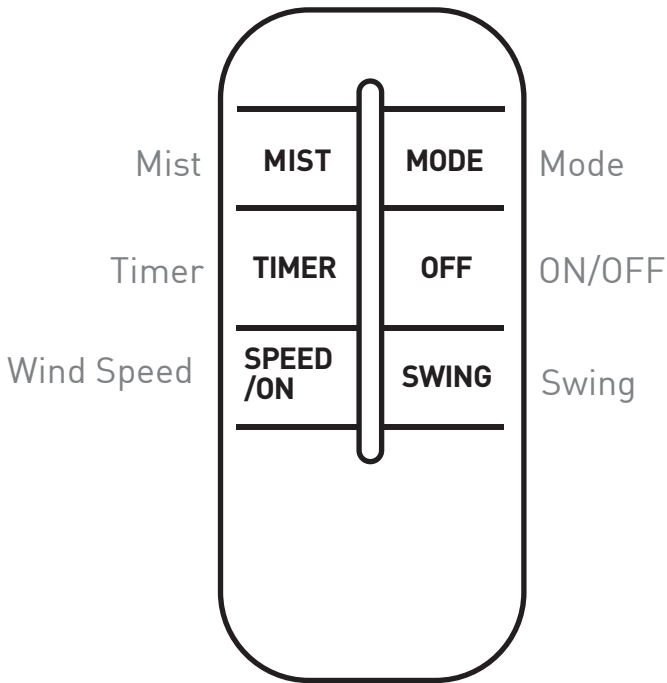
### CONTROL BUTTONS:

- A Mist
- B Swing
- C ON/Speed
- D OFF
- E Timer

## REMOTE CONTROL

The above functions can be controlled using the remote control by pressing the corresponding function buttons.

To use the remote control, insert two AAA 1.5V batteries in the battery housing of the remote.



# OPERATION ON THE FAN

When connected to the power supply, the indicator will illuminate. The fan is under standby mode. You can control the fan with the control buttons or the remote control.

## 1.MIST BUTTON:

- Press the “Mist” button to switch the ultrasonic mist on / off.
- Turn the knob (A) to increase or decrease the level of mist.
- When the mist function is selected the water indicator light will be illuminated green.
- If the water tank is empty (or short of water), the indicator light will be illuminated red.
- The mist function and fan function can be worked independently, or together.

## 2.TIMER BUTTON:

- Press the “Timer” button when the fan is on. The indicator will show the time remaining until the fan is due to switch off.
- You can select the length of time the fan will be in operation from spans ranging from 0.5 to 7.5 hours in 0.5-hour increments.
- Press the TIMER button repeatedly, and the sum of the values of the lights is the remaining time until shuts down.



### **3.WIND SPEED BUTTON:**

- The wind mode can only be adjusted by using the remote control.
- Press “Mode” to set the wind mode (normal, sleep, natural).
- Set the wind speeds (high-medium-low) by pressing the “ON/SPEED” button several times.

### **4.ON/OFF BUTTON:**

- Use the “ON/SPEED” button to switch the fan ON.
- Press the “OFF” button to switch the fan OFF.

### **5.OSCILLATING BUTTON:**

- First, switch the fan on. Then press the “SWING” button. The mist fan head moves continuously from side to side.
- Pressing the button again stops the oscillation of the mist fan.

### **6.MANUAL TILT:**

- Hold the fan head securely. Then undo the wing screw on the right-hand side of the fan head.
- You can now tilt the head upwards and downwards to adjust the angle.
- After adjusting the angle, tighten the wing screw again.

## CLEANING AND MAINTENANCE

- Always unplug the fan before cleaning it.
- Clean the water tank and water unit once a week to prevent the formation of scale, algae, or bacteria.
- If you do not intend to use the fan for an extended period, empty the water tank and dry the water unit with a microfiber cloth.
- If the fan will be placed in storage for a more extended period of time (over winter, etc), always cover it with a suitable cover to prevent dust from entering the device.
- To avoid damaging the plastic and indicators, do not use any abrasive cleaning agents or chemicals.
- The fan must not be opened by unauthorized persons.

**CAUTION:** Unplug the fan from the electrical supply source before cleaning. After servicing, any safety device (including grilles and blades) it must be reinstalled or remounted as previously installed. Use a soft damp cloth then wipe with a dry cloth. Do not use harmful detergents. Do not bend the blades.



CONTACT US AT:

E-6,7 & 8, Sector-59, Noida, U.P.-201 309, India. Call: 92-789-12345

E-mail: [service@kuhl.in](mailto:service@kuhl.in) or visit us at [www.kuhl.in](http://www.kuhl.in)